

Flow Switch



8.716-139.0

Part No.	Original No.	Description
8.712-247.0	6-021730	MV60, Yellow
8.716-139.0	950499	FS 1 McDonnell - 1/2" FPT
8.716-138.0	950496	FS 6 McDonnell - 1" FPT

Flow Switch



ST-5

ST-6

- Brass body
- 8 GPM
- 3600 PSI
- 3 Amp reed switch
- 180°F
- 3/8" inlet & outlet ports

Part No.	Original No.	Description
8.712-243.0	875808	ST-5 – Vertical Mount Only
8.712-245.0	875470	ST-6 – Horizontal or Vertical Mount
8.704-122.0	109675	ST-5 – Reed Switch
8.704-121.0	109673	ST-6 – Reed Switch

Legacy 500 Flow Switch



Vertical mounting or versatile mounting.



- Tough, impact-resistant, glass-reinforced, nylon housing
- Tungsten contact reed switch
- Heavy-duty machine brass internals
- Viton seals
- For solenoid control only
- 1-8 GPM
- 4350 PSI
- 3/8" inlet/outlet
- 190°F
- 1 Amp switch
- 2 wire reed

Part No.	Original No.	Description
8.712-244.0	410305A	Vertical Mount Only
8.712-247.0	410308A	Mount in Any Position (Gray)
9.803-266.0	109672	Reed Switch Only (2 wire)

Flow Switch



Spring return float allows full mounting versatility.



- 4050 max pressure
- 3500 rated pressure
- Horizontal or vertical mount
- Forged brass body
- NEW 3-wire reed switch
- 3/8" MPT inlet/outlet
- 8 GPM
- 190°F
- One Amp switch
- Solenoid control

Part No.	Original No.	Description
8.712-246.0	410307P	Flow Switch
9.803-266.0	109672	Reed Switch Only (2 wire)

Phoenix Flow Switch w/ Pilot

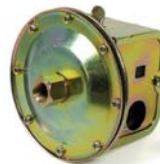


- .75-16.0 GPM
- 4000 PSI
- 165°F
- 3 Amp-250 Volts
- 96" reed cord
- Includes 8mm pilot
- 3/8" F inlet/outlet
- 2.5 lbs
- Mounting hole

Part No.	Original No.	Description
8.712-252.0	410320	Switch with Pilot
8.712-253.0	410322	Reed Switch

VAC Switch - Burner Control

Normally open (NO) switch closes when pump vacuum begins drawing water and opens when vacuum is broken due to pump shut down or empty water tank.



- 1/4 FPT connect
- Heavy-duty 16 Amp contacts
- 140°F max water temperature

Part No.	Original No.	Description
8.712-391.0	413031	1.5" (HG) Vac Switch
8.712-392.0	728855	2.5" (HG) Vac Switch
8.712-393.0	728856	4.5" (HG) Vac Switch

Pressure Switch

Operation without opening switch case – Blue = Common
CONNECT: Red/Blue = N/C, Blue/Brown = N/O



- 200°F
- Stainless steel plunger
- 3600 PSI
- 1/4" MPT nipple
- 15 Amp – 115 or 230V AC
- 3-wire – internally wired for either N/O or N/C

Part No.	Original No.	Description
8.712-261.0	411060	Pressure Switch (Switches @ 360 PSI)
8.712-262.0	411060-40	Pressure Switch (Switches @ 580 PSI)
8.701-311.0	082022	Micro Switch (10 Amp 28VDC)
8.701-312.0	082023	Micro Switch (15 Amp 115/230VAC)

NOTE: 10 AMP 28 VDC Micro Switch available. Excellent for use on 12 VDC Hot Pressure Washers.

Compact Pressure Switch

Three Amp rating provides the switching power to control fuel solenoids just like the large switches. Body measures 1" x 1-1/4" x 2" (Not including wire or connector)



- 3600 PSI max rating
- 580 PSI switch pressure
- 200°F
- 1/4" brass MPT connect SS plunger
- 3 Amp switch rating – 250V
- 48" – 3-wire cable for use in either NC or NO application: Blue = Common Brown = NO; Red = NC

Part No.	Original No.	Description
8.712-260.0	411050	Compact Pressure Switch

Pressure Switch



- Activated pressure 375 PSI

8.716-129.0

Part No.	Orig. No.	Description	PSI	Amp	Voltage
8.716-129.0	875651	Hotsy	4000	15	250
8.712-267.0**	885680	Hotsy	5800	15	250
8.717-667.0*	753134	Repair Kit-Seal			
8.717-668.0*	753228	Repair Kit-Plunger			
8.717-256.0*	875653	Micro Switch			

* Repair parts only fit the 8.716-129.0.

** Same as Red Pressure Switch below. Repair parts listed below.

Black Pressure Switch



- Brass stem and stainless steel nipple
- 3600 PSI
- 580 PSI switching pressure
- 195°F
- 1/4" male inlet
- 15 Amp
- Weight: 8 oz
- 250 volts

Part No.	Original No.	Description
9.802-458.0	6-021720	Black Pressure Switch

Red Pressure Switch



- All stainless steel construction
- Rated pressure: 5800 PSI
- 6500 PSI max pressure
- 640 PSI switching pressure
- 195°F
- 3/8" male inlet
- 15 Amp max draw
- Weight 10 oz

Part No.	Original No.	Description
8.712-267.0	411065	Red Pressure Switch
8.704-572.0	111459	Heavy-duty MicroSwitch
8.703-967.0	109105	Repair Kit Seal

Breaker Switches



Part No.	Orig. No.	Description
8.716-067.0	875971	7.5HP 230V 1PH 1400
8.716-068.0	875972	7.5HP 230V 3PH 1400
8.716-069.0	875973	7.5HP 460V 3 PH 1400
8.716-073.0	950198	10A/460V 3PH 900
8.716-074.0	950191	12A/480V 3PH
8.716-075.0	950208	15A/18.8V 3PH 800
8.716-076.0	950204	20A/277V 3PH 900
8.716-070.0	875618	25A/250V 3 PH 2255
8.716-077.0	950200	30A/277V 1PH 900
8.716-065.0	875644	40A/230V 1PH
8.716-066.0	875953	40A/230V 1PH 1070
8.716-071.0	875645	DPST 20A/240V 1PH 1220

Rocker Switch



9.802-453.0

9.802-452.0

8.716-054.0

8.716-048.0

8.716-040.0

- On/off switch
- Lighted available
- 125/250V

Part No.	Orig. No.	Description	AMP	Voltage
9.802-453.0	876034	Corvette Switch	16A	125/250V
8.716-048.0	875658	DBL MOM - LX1500	15A	115V
8.716-047.0	875746	DBL MOM - LX1500	15A	115V
8.716-037.0	875985	DBL MOM LT, 24V Machine & Remote	15A	24V
8.716-055.0	950227	DPST - 555SS	10A	250V
8.716-046.0	875686	DPST - 5700 - Amber	16A	250V
8.716-054.0	950187	DPST - 790	20A	230V
8.716-042.0	875662	NEON LMP	3A	230V
8.716-041.0	875661	NEON LMP	20A	230V
8.716-038.0	875585	LT	25A	125V
9.802-452.0	876321	RED Actuator	15A	125/250V
8.716-036.0	875465	12V LMP - 761/861/1060	15A	12V
8.716-043.0	875665	24V LMP	10A	250V
8.716-039.0	875603	125V LMP	20A	125V
8.716-040.0	875610	250V LMP	20A	250V

Toggle / Push Button Switch



- 7/16" mounting bushing
- 1/2" diameter mounting hole required
- Mounting hardware included

Part No.	Orig. No.	Type	Amp	Voltage	HP*	Connects
8.712-320.0	411607	DPST	20A	110V		m/spade
8.716-115.0	950551	DPST	17A	115-230V		
8.709-065.0	285189*	DPST	20A	120V	3/4	screw
8.701-797.0	950521	DPST	16A	125V		
8.709-705.0	337206*	DPST	20A	125V	1.5	screw
8.712-320.0	950550	DPST	20A	125V	1.5	
8.716-112.0	950519	DPST - 9460	10A	250V		
8.709-704.0	337205*	DPST	20A	250V	2.0	screw
8.716-113.0	950522	DPST	20A	250V		
8.712-319.0	411605*	SPST	20A	110V	1.0	m/spade
8.709-053.0	285139	SPST Push on/push off	5A	120V		screw
8.709-064.0	285187	SPST Push and hold on/release off	15A	120V		screw
8.709-054.0	285140*	SPST	20A	120V	3/4	m/spade
8.716-110.0	950518	SPST	15A	125V		
8.716-078.0	876027	SPST	20A	125-250V		
8.716-114.0	950546	2-position On/Off	20A	125V		
8.709-706.0	337207	Switch Guard				
8.716-053.0	950186	Pump	40A	230V		

*Motor rated

Accura High Limit Switch



411264

- Operates as safety device to shut off burner to prevent machine (water) overheating flashing to steam
- Does not turn back on until water has cooled 50° - 70°F
- Normally used with other adjustable or fixed range thermostat which regulates water temperature
- 15 Amp @110V/10 Amp @ 220V
- Heavy-duty brass housing (7000 PSI collapse rating)
- UL - CSA rated, bimetal switch components
- 1/4 male spade lug terminals
- 1/2" MPT external thread connects for attaching conduit or PVC wire connectors

Part No.	Orig. No.	Probe MPT	Temperature
8.712-300.0	411250	3/8"	110°F
8.712-301.0	411254	3/8"	120°F
8.712-302.0	411256	3/8"	140°F
8.712-304.0	411262	3/8"	170°F
8.712-306.0	411266	3/8"	180°F
8.712-309.0	411272	3/8"	210°F
8.712-311.0	411276	3/8"	230°F
8.712-305.0	411264	1/2"	180°F
8.712-307.0	411268	1/2"	200°F
8.712-308.0	411270	1/2"	210°F
8.712-298.0	411232	1/2"	230°F
8.712-313.0	411278	1/2"	250°F
8.712-316.0	411332	1/2"	330°F
8.705-351.0	141538	1/2"	PVC Coupler

Accura High Limit Switch w/ Wire Lead



- Operates as safety device to shut off burner to prevent machine (water) overheating flashing to steam
- Does not turn back on until water has cooled 50° - 70°F
- Normally used with other adjustable or fixed range thermostat which regulates water temperature
- 15 Amp @110V/10 Amp @ 220V
- Heavy-duty brass housing (7000 PSI collapse rating)
- UL - CSA rated, bimetal switch components
- 1/4 male spade lug terminals
- 1/2" MPT external thread connects for attaching conduit or PVC wire connectors

Part No.	Orig. No.	Probe MPT	Wire Lead	Temperature
8.712-310.0	411274	1/2" - Two Wire	36"	210°F
8.712-297.0	876057	1/2"	42"	230°F
8.712-299.0	411233	1/2"	80"	230°F
8.712-315.0	411331	1/2"	80"	330°F

Ground Fault Circuit Interrupters (GFCI)

GFCI's protect people and equipment by interrupting potentially lethal ground circuits exceeding 6mA. The dangers of electrical shocks have been long known – GFCI's are the only real way to be safe. Most city & county codes now require GFCI protection on power cleaning equipment.



- U.L. listed
- Three wire circuits
- Transient voltage protection
- 4 - 6mA ground fault protection
- Grounded neutral protection
- Mechanical trip indicator
- Compact size
- Rugged construction
- Radio frequency interference suppression

Part No.	Orig. No.	Volt	Amp	Length	Plug included
8.709-850.0	337626	120V	15A	12 ft	yes
8.715-943.0	826245	120V	15A	37 ft	yes
8.709-842.0	337607	120V	20A	12 ft	no
8.903-807.0	337608	120V	20A	12 ft	yes
9.802-431.0	981000	120V	20A	35 ft	yes
8.709-851.0	337627	220V	15A	6 ft	yes
8.715-947.0	630679	230V	15A	37 ft	no
8.709-852.0	337630	240V	15A	12 ft	yes
9.802-433.0	630682	240V	20A	37 ft	no
8.709-853.0	337632	240V	30A	6 ft	yes
8.709-860.0	337645	240V	30A	6 ft	no
8.709-861.0	337647	240V	30A	12 ft	no
8.715-948.0	630813	240V	30A	12 ft	yes
9.802-430.0	631004	240V	30A	35 ft	no
8.709-855.0	337635	240V	30A	35 ft	yes
8.715-949.0	631048	240V	40A	10 ft	no
9.802-434.0	630814	240V	40A	36 ft	no

GFCI Plug without Cord

8.709-847.0	875597	120V	15A	N/A	yes
8.709-858.0	875569	120V/230	20A	N/A	yes
8.715-951.0	691862	480V	30A	N/A	yes
8.715-945.0	691860	240V	50A	N/A	yes

NOTE: User-attached plug also includes the sealant necessary to attach the power cord per UL Specification.

Enclosure Box for Magnetic Motor Starter Sets



- NEMA 65 non-metallic enclosure Dim: 4-1/3" W, 4" D x 6" H
- 8 (1/2-3/4") wiring knockouts on box
- Holes pre-drilled for mounting contactor and overloads with mounting screws included

Part No.	Original No.	Description
8.902-525.0	260268X	Box, Toggle & Hardware

Magnetic Motor Starters

For pressure washer and carwash applications.



Contactor



Overload



Coil

- 24VAC Control
- 1Ø - 240V, 3Ø - 240V or 480V Contactor
- Componentized for flexibility
- Thermal overloads adjustable within range shown
- Electrical life: 1,000,000+ cycles
- Mechanical life: 20,000,000+ cycles
- Contacts: 90% silver, 10% cad-oxide

Type	24V Coil	120V Coil	220V Coil	FL Amp	220V 1Ø HP	220V 3Ø HP	440V 3Ø HP
Contactors							
				UL Rating			
A	260265 8.708-753.0	260290 8.902-527.0	260295 8.902-532.0	22	2	3	5
B	260266 8.708-754.0	260291 8.902-528.0	260296 8.902-533.0	24	2	5	7.5
C	260267 8.902-523.0	260292 8.902-529.0	260297 8.902-534.0	32	3	5	10
D	260268 8.902-524.0	260293 8.902-530.0	260298 8.902-535.0	40	5	7.5	15
E	260269 8.902-526.0	260294 8.902-531.0	260299 8.902-536.0	52	7.5	10	20
F	260351 8.708-790.0	260352 8.708-791.0	260353 8.708-792.0	90	10	15	30

Part No.	Original No.	Voltage	Fits Contactor
Coils Only			
8.708-764.0	260274	24V	A,B,C,D
8.708-762.0	260272	120V	A,B,C,D
8.708-763.0	260273	220V	A,B,C,D
8.708-765.0	260275	480V	A,B,C,D
8.708-766.0	260277	120V	E
8.708-767.0	260278	220V	E

Part No.	Original No.	Type	Amp Range	Fits Contactor
Thermal Overloads				
8.708-749.0	260253	Man	9.0-15	A,B,C,D
8.708-758.0	260270	Man	14-23	A,B,C,D
8.708-760.0	260271	Man	17-26	A,B,C,D
8.708-742.0	260247	Man	20-33	C,D
8.708-744.0	260248	Man	28-42	C,D
8.708-746.0	260249	Man	35-50	E,F
8.708-802.0	260433AUTO	Auto	2.0-3.3	A,B,C,D
8.708-803.0	260437AUTO	Auto	4.5-7.5	A,B,C,D
8.708-804.0	260440AUTO	Auto	6.0-10	A,B,C,D
8.708-750.0	260253AUTO	Auto	9.0-15	A,B,C,D
8.708-759.0	260270AUTO	Auto	14-23	A,B,C,D
8.708-761.0	260271AUTO	Auto	17-26	A,B,C,D
8.708-743.0	260247AUTO	Auto	20-33	C,D
8.708-745.0	260248AUTO	Auto	28-42	C,D
8.708-747.0	260249AUTO	Auto	35-50	E,F

- Used to mount Overload to Motor Starter Contactors

Part No.	Original No.	Description
Thermal Overload Connector Kits		
8.708-768.0	260281	A,B,C,D
8.708-770.0	260284	E
8.708-789.0	260349	F

Contactor Switch



DP Series Contactors				Motor HP @ Voltage			
Part No.	Cutler-Hammer Catalog No.	Coil Voltage	FL Amps	1 Phase		3 Phase	
				115V	230V	230V	460V 575V
8.724-267.0	C25DNY151TL	24V	15	.75	2	3	5 5
8.724-264.0	C25DNY151AL	115V	15	.75	2	3	5 5
8.724-265.0	C25DNY151BL	230V	15	.75	2	3	5 5
8.724-266.0	C25DNY151CL	460V	15	.75	2	3	5 5
8.724-269.0	C25DNY152TL	24V	25	2	3	7.5	10 10
8.724-268.0	C25DNY152AL	115V	25	2	3	7.5	10 10
8.724-270.0	C25DNY152BL	230V	25	2	3	7.5	10 10
8.724-271.0	C25DRC325C	460V	25	2	3	7.5	10 10
8.724-275.0	C25DNY153TL	24V	30	2	5	10	15 15
8.724-272.0	C25DNY153AL	115V	30	2	5	10	15 15
8.724-273.0	C25DNY153BL	230V	30	2	5	10	15 15
8.724-274.0	C25DNY153LL	380V	30	2	5	10	15 15
8.724-280.0	C25DNY154TL	24V	40	3	7.5	10	20 20
8.724-276.0	C25DNY154AL	115V	40	3	7.5	10	20 20
8.724-277.0	C25DNY154BL	230V	40	3	7.5	10	20 20
8.724-279.0	C25DNY154LL	380V	40	3	7.5	10	20 20
8.724-278.0	C25DNY154CL	460V	40	3	7.5	10	20 20
8.724-283.0	C25DNY155TL	24V	50	3	10	15	30 30
8.724-281.0	C25DNY155AL	115V	50	3	10	15	30 30
8.724-282.0	C25DNY155BL	230V	50	3	10	15	30 30
8.724-286.0	C25FNY44CL	24V	60	5	10	20	40 40
8.724-284.0	C25FNY44AL	115V	60	5	10	20	40 40
8.724-285.0	C25FNY44BL	230V	60	5	10	20	40 40

Overload Switch



XT Overloads for DP Contactors		
Part No.	Cutler-Hammer Catalog No.	Amp Range
8.724-297.0	XTOBP60CC1DP	0.4 - 0.6
8.724-298.0	XTOB001CC1DP	0.6 - 1.0
8.724-299.0	XTOB1P6CC1DP	1.0 - 1.6
8.724-300.0	XTOB2P4CC1DP	1.6 - 2.4
8.724-301.0	XTOB004CC1DP	2.4 - 4.0
8.724-302.0	XTOB006CC1DP	4.0 - 6.0
8.724-303.0	XTOB010CC1DP	6.0 - 10.0
8.724-312.0	XTOB016CC1DP	10.0 - 16.0
8.724-304.0	XTOB024CC1DP	16.0 - 24.0
8.724-305.0	XTOB032CC1DP	24.0 - 32.0
8.724-306.0	XTOB040DC1DP	24.0 - 40.0
8.724-307.0	XTOB057DC1DP	40.0 - 57.0

Relay Switch



8.708-943.0

Part No.	Orig No.	Description
8.708-943.0	875648	DPST NO 24VAC Omron 900/1400/1800 Series
8.716-087.0	875826	DPST NO 24VAC Omron 2000 Series

On / Off Cam Switch



- Legend plate: on/off
- Tear drop-shaped knob
- Face plate 2-1/2" square
- Motor ratings:
410202 – 1-1/2 HP/ 110V
410204 – 6 HP/ 240V

Part No.	Orig No.	Description
8.712-213.0	410202	20 Amp/ 110 Volt
8.712-215.0	410204	28 Amp/ 240 Volt

ON/OFF Rotary Switch



9.802-449.0

- Single or three phase
- 2 position or 3 position
- Heavy-duty

Part No.	Orig No.	Description
9.802-450.0	876028	2-position 115V/600V
9.802-449.0	876058	3-position 115V/230V 1PH 20 Amp
8.716-027.0	6-020203	3-position 230/460V, 3PH
8.716-030.0	950552	Rotary Switch

Machine Control Cam Switch - 3 Position



- Heavy-duty rotary cam switches
- Legend plate reads Off/Pump/Burner
- Quick make/break action reduces arcing
- Wiring boot included (except 410242-3)
- Legend plate 2-1/2" square
- Four-screw mounting

Part No.	Orig. No.	Model	Amp	Voltage	Phase
8.712-219.0	410210	S220-1686	20	110V	1Ø
8.712-224.0	410221	S220-1687	20	220V	1Ø
8.712-225.0	410223	S220-1688	20	220V	3Ø
8.712-227.0	410231	S225-1686	30	110V	1Ø
8.712-228.0	410232	S225-1687	30	220V	1Ø
8.712-229.0	410233	S225-1688	30	220V	3Ø
8.712-234.0	410242	S432-4095	40	240V	1Ø
8.712-235.0	410243	S432-1402	40	480V	3Ø

Single Hole Mounting - requires 1 22mm (7/8" Dia) hole

Part No.	Orig No.	Model	Amp	Voltage	Phase
8.712-218.0	410208	220-1789	20	110V	1Ø

"Big Boot" Cam Switch - 3 Position

Large rectangular boot for easier wiring.



- Mounting configuration and electrical ratings same as "S" switches above

Part No.	Orig. No.	Model	Amp	Voltage	Phase
8.712-238.0	410260	T225-1686	30	110V	1Ø
8.712-239.0	410262	T225-1687	30	240V	1Ø
8.712-241.0	410265	T225-1688	30	240V	3Ø

Single Hole Mounting - requires 1 22mm (7/8" Dia) hole

Part No.	Orig No.	Model	Amp	Voltage	Phase
8.712-223.0	410219	220-1843	20	220V	1Ø

Universal "Elektra"

UL/CSA Rated Machine control cam switches



8.712-236.0



8.712-237.0



8.712-240.0

- Position - "Off" - "Pump Burner"
- Quick make/break action - reduces arcing
- 2 or 4 screw mount (2-1/2 square legend plate)
- (Matches: Salzer/Kraus -Naimer/ Bremas & Klockner - Moeller mounts)
- "Boot" has plenty of wiring room
- Screw to screw/terminal to terminal replacement for salzer "S" & "J" type switches above
- "Tite Boot" excellent dust & moisture seal
- Contacts UL/CSA Rated: 25 Amp vs 20 Amp, 35 Amp vs 30 Amp, 50 Amp vs 40 Amp

Part No.	Orig No.	Amp	Wiring Poles	Phase	Voltage	HP
8.712-236.0	410251	25	1	1	120	1.5
8.712-237.0	410253	25	2	1	120/240	1.5/2.0
8.712-240.0	410263	35	2	1	120/240	2/3
8.712-242.0	410267	50	2	1	120/240	3/7.5

NOTE: None of the ELEKTRA switches are for use on 3 phase motors without adding fuses or thermal overload.



"Elektra" On - Off Switch with box UL/CSA Rated 25 & 35 Amp. Compact 3-1/4" Square x 3-3/4" Deep Enclosure "Versatile Mount".

Part No.	Orig No.	Amp	Wiring Poles	Phase	Voltage	HP
8.712-214.0	410203	25A	2	1	120/240	1.5/2
8.712-216.0	410205	35	2	1	120/240	2/3

NOTE: None of the ELEKTRA switches are for use on 3 phase motors without adding fuses or thermal overload.

60 AMP On / Off Cam Switch & Box

Cam Action Fast "Make-Break" to reduce arcing.



- 60 Amp disconnect rating
- Four 1/2" knock-outs
- Versatile mounting
- Motor ratings:
7.5 HP @ 240vt 1Ø
5.0 HP @ 240vt 3Ø
30 HP @ 480vt 3Ø

Part No.	Orig. No.	Description
8.712-217.0	410206	60 Amp Switch w/ Large Box 4-1/2" w x 7" H x 3-3/4" D
8.712-211.0	410190	60 Amp Switch only
8.712-212.0	410192	Box only 3-7/8" x 4-7/8" x 2-3/4" for 410190 switch using 10 gage/smaller wire
8.700-489.0	076521	Knob

NOTE: Switch does not have thermal overload protection

30 AMP Toggle Switch



- 30 Amp 600 Volt - DPST
- With or without box
- Rated for:
2 HP motor @ 115V
3 HP Motor @ 230V

Part No.	Orig. No.	Description
8.709-696.0	337187	Switch only
8.903-802.0	337188	Switch & Rain Tight Box
8.709-708.0	337210*	Switch w/ NEMA 1 Box

*Not Rain Tight (Baldor Replacement)

Manual Motor Starter with Sealed Box



- 25 Amp with adjustable overload
- Adjustment range 20-25 Amps
- Sealed box 3-1/4"W x 3-1/2"D x 6-1/2"H
- 110-500 Volt IEC rated
- 2 cord grips fit 1/2" threaded knockouts
- Protective cover over buttons
- Single & 3-phase wiring instructions

Part No.	Orig. No.	Description
8.709-709.0	337212	Motor Starter

Wire Loom - for wiring harnesses



- Protects wires from abrasion and crushing
- Controls bundles of wires and allows for multiple exits at wiring points
- "Factory Perfect" look for all machines

Part No.	Orig. No.	Description
8.709-679.0	337120	1/4" ID 100' Roll
8.709-680.0	337121	3/8" ID 100' Roll
8.709-681.0	337122	1/2" ID 100' Roll
8.709-682.0	337123	5/8" ID 100' Roll

Winco AC Generator



2000 Watt, 120 VT, 3600 RPM, 16.7 Amp.

- Industrial-duty – 3 carbon brushes
- The STANDARD in the pressure washing industry: WINCO 2FSM2PC-1
- Starts & runs 1/2 HP motor
- 5/8" diameter shaft rotates either direction
- Extra slip ring for smoother power curve during motor starting
- Dual sealed permanent bearings
- 15" L x 6.5" W x 6.75" H
- 59 lbs weight

Part No.	Orig. No.	Description
9.802-527.0	857061	Winco AC Generator

- Genuine Winco parts
- Save downtime—we stock below items & more!

Part No.	Orig. No.	Description	No. Req'd
Winco Repair Parts			
8.700-603.0	078451	Bearings	2
8.700-604.0	078452	Brushes	3
8.700-606.0	078454	Capacitors	2
8.700-607.0	078455	Rectifier	1
8.700-609.0	078457	Receptacle	2
8.700-611.0	078459	Fan	1

Voltmaster Generator

2500 Watt/120V/21.6 Amp @ 3600 RPM.



- Industrial-type watertight enclosure (11-5/8" x 7-1/2" diameter)
- Brushless design
- All copper windings – High surge capacity
- Circuit breaker protection (standard)
- Shaft rotates either direction
- 7/8" shaft, 2 sealed (ball) bearings
- 36.5 lbs weight
- Adapter plate for replacement of Winco model 2FS2PC-1 available

Part No.	Orig. No.	Description
8.709-810.0	337441	2500 Watt Generator
8.903-806.0	337443	Adapter Plate & Fasteners

In-Line Thermostat

In-Line Controls for Pressure Washers and Steamers.



- Positive bimetal temperature control
- 1/2" inlet/outlet FPT ports
- 2000 PSI max working pressure
- Universal 1/4" spade terminal connection

Part No.	Orig. No.	Description
8.712-492.0	430025	60-250°F
8.712-493.0	430035	60-350°F

ELECTRICAL COMPONENTS

Thermostats



8.712-191.0



8.716-102.0

Part No.	Orig. No.	Description
8.712-191.0	955930	240°F 1M Probe
8.712-195.0	955940	240°F 2M Probe
For use with above:		
8.712-190.0	915390	Mounting Plate
8.718-779.0	735321	Screws (2), Mounting Plate
8.712-189.0	835150	Dial
8.707-286.0	389522	Well
9.804-564.0	735226	Screw, Well
8.716-102.0	950513	Temp Control Bulb 200°F
8.712-199.0	950509	Temp Control w/ Bulb
8.712-200.0	950516	-100 + 400 Fenwall
8.712-206.0	875707	Switch Therm NC 140°F

Adjustable Thermostat



With panel-mount controls.



- 4000 PSI
- 302°F
- 3 1/2" immersion bulb w/ 60" capillary tube
- Accuracy ± 2.5%
- Temperature change response within ± 6°F
- 16 Amp - 250 volt
- Large easy read dial
- Seal, nut & 1/2" transition coupling included

Part No.	Orig. No.	Description
8.904-556.0	430050	0-194°F Thermostat
8.712-497.0	430058	0-248°F Thermostat
8.904-557.0	430060	0-302°F Thermostat

Adjustable Flow Thru Thermostat



8.700-501.0



8.904-555.0

- Stainless Steel Case
- Silver Contacts
- Ceramic Insulation
- Stop Collar
- Tension Adjusting Screw
- 3000 PSI
- 10 Amps - 110 Volts
- 5 Amps - 220 Volts
- Adjustable 85° - 195°
- 1/2" inlet / 3/8" outlet
- Fenwall Inside

Part No.	Orig. No.	Description
8.904-555.0	430027	Thermostat
8.700-501.0	076731	Switch Only

Timers



9.802-473.0

- Preset and adjustable available
- Heavy-duty

Part No.	Orig. No.	Description
9.802-473.0	876320	Timer Multifunction 24V/120/240V, 1700/1800 Series
9.802-472.0	891010	Timer Solid State 120V 5-60 min adj, 1700, Auto Start
8.716-246.0	890996	Timer Auto Start 900/1400/1800 Series
8.716-244.0	860209	Timer, Thermo Shutdown
8.716-240.0	924988	Artisan Time Capsule

Fuses

- Full range of fuses
- Protect your equipment

Part No.	Orig. No.	Description
8.716-206.0	676638	30 Amp
8.716-197.0	676713	1.5 Amp/ 250V Time Delay
8.716-205.0	676750	25 Amp/600V Fast Acting
8.716-191.0	676754	.3 Amp Time Delay Midget
8.716-192.0	676755	.6 Amp Time Delay Midget
8.716-196.0	676832	.25 Amp Time Delay 5 x 20
8.716-198.0	676848	6.25 Time Delay MDL
8.716-199.0	676898	6.25 Amp Time Delay FNM
8.740-108.0	677088	4 Amp/250V Glass End
8.716-163.0	677390	MDL-8 250V Small Dim
8.716-188.0	677391	MDL-5 250V Small Dim
8.933-007.0	677513	KTK-R1 600V Midget
8.716-170.0	677514	GDL .5 Amp/120V
8.716-202.0	854659	7 Amp/230V Slow
8.716-203.0	854997	.5 Amp/230V Fast
8.716-116.0	855003	3.0 Amp
8.716-201.0	855004	2.5 Amp/230V Slow
8.716-204.0	855009	4 Amp 3AG Fast Acting
8.716-222.0	676711	Fuse Block
8.716-221.0	676758	Fuse Holder DNLM 30 Amp MDGH
8.716-216.0	676849	Fuse Holder in Line
8.716-219.0	677392	Fuse Block GE# 9T58K0000G48
8.716-223.0	707146	Fuse Holder



Vinyl Electrical Tape



- Premium grade - 7 mil
- UL approved
- 3/4" x 60'

Part No.	Orig. No.	Description
8.704-706.0	118910	Roll 3/4" x 60'

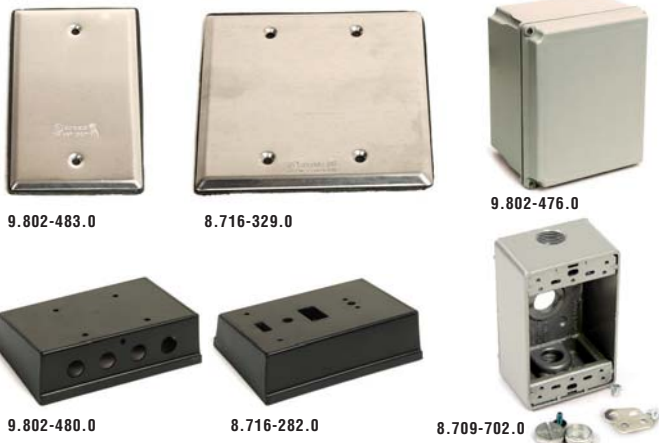
Step-Down Transformers



- Industrial duty
- Drops primary voltage to selected secondary voltage

Part No.	Orig. No.	Description
8.716-898.0	890812	Micron 208-240/480V-120V/24V
8.716-902.0	890868	240V/208/240V-24V S5732-5
8.716-890.0	890869	240/460-24V Control 1500/2000 Series
8.716-891.0	890881	110-230V x 24 100 Control 1500/2000 Series
8.716-892.0	960144	24 x 240V .75VA Control 1523
8.716-900.0	960145	240V x 24V 40VA GF Mod
8.716-586.0	960151	240V/24V 2000/9000 GF Heater
8.717-718.0	960173	460 x 240V 1KVA
8.716-887.0	960181	480 x 240V 1 KVA 993-1423
8.716-881.0	960182	110/60 480 x 240 .05 KVA 900/5700 GF

Junction Boxes & Enclosures



9.802-483.0

8.716-329.0

9.802-476.0

9.802-480.0

8.716-282.0

8.709-702.0

Part No.	Orig. No.	Description
8.716-282.0	615411	Box, Plastic Front 8.0 x 5.6 - 1 sq hole
8.716-289.0	615412	Box, Plastic Front 8.0 x 5.6 - 2 sq hole
8.716-288.0	615413	Box, Plastic Front 8" x 5.6"
9.802-480.0	615414	Box, Plastic Back
9.802-479.0	630649	Channel
9.802-474.0	615470	Box, Fiberglass 6" x 8"
9.802-475.0	220275	Box, Plastic 8" x 8" x 4" w/ Lid
9.802-476.0	616009	Box, Plastic 10" x 8" x 6" w/ Lid
9.802-477.0	616001	Box, Plastic Carlon E9801
9.802-478.0	768705	Lid, Plastic Carlon E9801 Box
8.716-329.0	826622	Cover, Box Elec. 4" x 4"
9.802-483.0	826610	Cover, Box Elec. 2" x 4"
9.802-484.0	615308	Box, Conduit 3/4" x 3/4" x 3/4"
8.716-341.0	615570	Box, Starter Enclosure
8.717-011.0	875703	Box, Starter Enclosure
8.709-702.0	337203	RainTite Switch Box
8.709-703.0	337204	Switch Box Cover

Molded Power Cord



- Water tight
- Factory finished look

Part No.	Orig. No.	Description
9.802-435.0	826024	3' 14/3 w/ Plug

Cord Caps / Plugs



8.709-653.0

8.709-655.0

8.709-656.0

8.709-659.0

- Industrial quality
- Dead front cord caps – nylon body straight plugs & "Auto-Clamp" for cord
- 337013 angle plug has vinyl body and both 30A & 50A neutral leg

Part No.	Orig. No.	Description
8.709-653.0	337000	15A/120V, Black Nylon
8.709-655.0	337004	20A/120V, Black Nylon
8.709-656.0	337006	20A/250V, Black Nylon
8.709-659.0	337013	30A-50A/250V, Black Vinyl

Romex Connectors (Metal)



Part No.	Orig. No.	Description
8.709-663.0	337020	1/2" Strt. Connector
8.709-664.0	337021	3/4" Strt. Connector
8.709-660.0	337017	1/2" Lock Nut Only
8.709-661.0	337018	3/4" Lock Nut Only

Liquid-Tight Strain Relief Connector for Cable, Wire & Tubing

Keep water-tight NEMA-4 & 4x enclosures water-tight with these unique fittings.



DOME NUT WITH INSIDE TAPER As the dome nut is tightened, the seal ring grips, holding the cable wire or tubing positively in place.

LEAD SCREW THREAD The dome nut can be firmly tightened due to the high strength lead screw thread.

Part No.	Orig. No.	Type	Thread	Cord Size	Cord OD	Length
8.709-687.0	337135	Dome	1/2" NPT	14/3-12/3	.230"-.470"	1.8"
8.709-688.0	337137	Dome	3/4" NPT	14/3-12/3	.350"-.630"	2.0"
8.709-689.0	337139	Dome	3/4" NPT	12/3-10/4	.510"-.710"	2.0"



CLAMPING SPLINES Various sizes and odd-shaped cables, wires and tubing can be accommodated due to overlapping diagonally split clamping splines.

Part No.	Orig. No.	Type	Thread	Cord Size	Cord OD	Length
8.709-690.0	337155	Flex	1/2" NPT	14/3-12/3	.230"-.470"	4.3"
8.709-692.0	337159	Flex	3/4" NPT	12/3-10/4	.51"-.71"	5.2"