

# CHASSIS COMPONENTS

## Float Tank



- Heavy 3/16" durable plastic

9.804-042.0

Part No.	Orig. No.	Description
9.804-042.0	890880	2.5 gal w/o Adapter
8.706-642.0	890760	4.0 gal w/ Cover
8.706-643.0	952721	8.0 gal, 7-3/4" x 20-3/4" x 15"

## Fuel Tanks



9.803-533.0



9.803-534.0

Part No.	Orig. No.	Description
9.802-081.0	952724	6 gal 15.5" x 10" x 10"
9.803-533.0	952730	11 gal - Black
9.803-534.0	952731	11 gal - Red
8.706-614.0	952733	8 gal - Black
9.803-535.0	817312	Cap w/ Gauge - Fuel
9.803-536.0	817313	Cap w/ Gauge - Gas

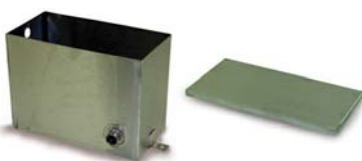
## Molded Plastic Float Tanks



- Molded polypropylene
- 7 liter size: 13" x 5" x 6"
- 1 gallon size: 10" x 5" x 8"
- No holes for max flexibility
- 1 gallon tank has tight-fitting lid, included
- 7 liter tank lid is snap-on & sold separately

Part No.	Orig. No.	Description
8.710-026.0	343002	7-Liter Tank Only
8.710-027.0	343003	7-Liter Tank Lid
8.710-028.0	343004P	1-Gallon Tank w/ Lid

## Stainless Steel Float Tank



- Fully welded and water tight
- 2.8 gallon capacity
- 12" x 9" x 6"
- 16 gauge #303 stainless steel
- 1/2" full coupling (SS) inlet/outlet
- Convenient mounting tabs

Part No.	Orig. No.	Description
8.710-029.0	343006	Stainless Steel Float Tank
8.710-034.0	343016	Stainless Steel Lid

## Plastic Fuel Tank



- 9 gallon black plastic tank
- 4" fuel neck
- 19-5/8" L x 12" W x 10" H
- Two 1/4" FPT ports in bottom

Part No.	Orig. No.	Description
8.710-139.0	344727	9 Gallon Fuel Tank
8.710-140.0	344728	Plastic Fuel Cap, 2-1/4" Thread

NOTE: Cap not included with tank

## Fuel Tanks



8.749-322.0



8.749-324.0



8.749-321.0



8.749-323.0

- Seamless one-piece construction of marine grade, UV-protected polyethylene
- Built-in reserve (When gauge reads Empty, tilt to access additional fuel!)
- Rugged fill neck cap with vent
- 90° fuel withdrawal fitting
- Easy-to-read sight gauge
- 4 shapes & capacities from which to choose

Part No.	Gallons	Height	Length	Width
8.749-322.0	6.5	10.0"	21.50"	13.75"
8.749-324.0	9.0	10.0"	29.5"	13.75"
8.749-321.0	12.0	14.5"	23.0"	14.0"
8.749-323.0	12.0	11.5"	24.0"	18.0"

## 9 Gallon Fuel Tank



- 9 gallon black plastic tank
- Strap or Bolt mount (4/5/16" inserts in bottom)
- Metal inset 3/8" inlet/return lines
- Black - Crosslinked PE
- Vented fuel cap
- Filler neck doesn't extend beyond tank wall
- Compact Size: 19-3/4" L x 12" W x 10-1/2" H

Part No.	Orig. No.	Description
8.710-142.0	344735	9 Gallon Fuel Tank

NOTE: Includes fuel cap

## Fuel Caps



- For gas or diesel fuel tanks
- Fits standard 2-1/4" fuel necks

Part No.	Orig. No.	Description
8.710-137.0	344725	Fuel Cap
8.701-700.0	091520	Fuel Cap with Gauge 10"

## Battery Boxes w/ Cover, Marine Style

Protect Batteries on Pressure Washers, Boats or other Industrial Equipment.



- Attractive molded polypropylene
  - Complete with hold-down cleats and strap for cover
- Small:  
L: 8-1/2" W: 6" H: 8-1/2"  
Large: L: 11-1/4"  
W: 7-3/4" H: 10-3/4"

Part No.	Orig. No.	Description
9.802-090.0	813169	Small Box
9.802-075.0	813150	Large Box

## Rubber Parts



Part No.	Orig. No.	Description
9.802-064.0	859815	Grommet, Nozzle Holder
9.802-066.0	615527	Bumper
8.706-557.0	616018	Bellows, Leg Boot
9.802-067.0	830587	Bumper Pad, Engine
9.802-069.0	691877	Handle Grip
8.706-745.0	829620	Plug, Hole Plastic
9.803-046.0	784446	Mount, Rubber Vibration
8.706-525.0	891040	Mount, Rubber Vibration 203/8-25 std
8.706-553.0	891041	Mount, Rubber Vibration 60 duro
8.706-524.0	891048	Mount, Rubber Vibration 1-3/8" dia x 3/4"
8.706-554.0	891050	Mount Rubber
8.706-556.0	891051	Mount Vibration

## Caster Wheels



8.711-908.0      9.802-275.0      9.802-276.0

- Easy pivot of machines
- Locking or non-locking
- 360 degree swivel

Part No.	Orig. No.	Description
8.711-908.0	936697	3" Grey
9.802-275.0	983042	5" Swivel
9.802-276.0	983043	5" Swivel w/ Brake

## Complete Wheels



8.711-901.0      9.802-270.0      8.712-762.0

- High quality pneumatic, and semi pneumatic
- Fits 5/8" shaft, except 4-0305 fits 1/2" shaft

Part No.	Orig. No.	Description
8.711-901.0	4-0304	10" Mag
9.802-270.0	600255	10" Steel Rim w/ Tube
8.712-762.0	480115	10" White Steel Rim, 3/4" Hub w/ Tube

## Interchangeable Bearings & Hub Caps



- Two required for each wheel
- Fits all wheels of the above wheels

Part No.	Orig. No.	Description
8.700-484.0	076504	5/8" Bore Bearing
8.700-486.0	076505	3/4" Bore Bearing
8.700-485.0	076504P	5/8" Nylon Bearing
9.802-783.0	817322	Hub Cap - 5/8" Black
8.718-851.0	817323	Hub Cap - 1/2" Red

## Hand Tote II



- Strong 1" square steel tubing
  - Lightweight – only 8 pounds!
  - Rubber mounting feet for stability
  - Use with either gas or electric direct drive units
  - Compact size – 12" W x 19" H x 17" D
- Durable gloss black polyurethane finish
  - Electric:** 1.5 HP - 5.0 HP 56C Motor
  - Gas Eng:** 4.0 HP - 6.5 HP Honda 3.0 HP - 6.0 HP B&S / B&S Vanguard engines

Part No.	Orig. No.	Description
8.905-567.0	565230X	Hand Tote II