

Air Compressor Pumps

Best Pump Warranty In The Industry

The Mi-T-M Pump Exchange Program provides pump replacement for the Mi-T-M customer for the warranty period of two years from the date of purchase. If the air compressor pump fails due to a manufacturing defect during the two year warranty period, Mi-T-M will replace the pump at no charge. The air compressor should be returned to the Mi-T-M authorized dealer where it was purchased. The dealer will remove the pump and replace it with another single or two stage Mi-T-M pump at no charge. The Pump Exchange Program is not transferable and covers all pump problems with the exception of abuse or lack of basic general maintenance as stated in the owners manual and warranty statement.

**No more
pump-related
maintenance
costs!**

Single Stage Cast Iron Compressor

- The sturdy cast iron crankcase is bi-supported for smooth running, longer bearing life and less maintenance.
- An oversized cast iron crankcase creates a large oil reservoir for reliable lubrication.
- Oversized ball-bearing style shaft bearings for smooth operation and longer life.
- Crankcase is vented to atmosphere through an exclusive labyrinth system, avoiding the presence of oil into the streamline.
- High profile fin design on cylinders optimizes heat dissipation.
- Reversible cylinder head allows discharge to right or left side of pump.
- Large stainless-steel valves offer less restriction to flow, giving greater volumetric efficiency, cooler running temperatures and longer valve life.
- Cast iron head for heat dissipation.
- Industrial-duty inlet filter/silencer for remarkably low sound levels.

*Cast iron construction (excluding manifold)
with all components precision CNC machined.*

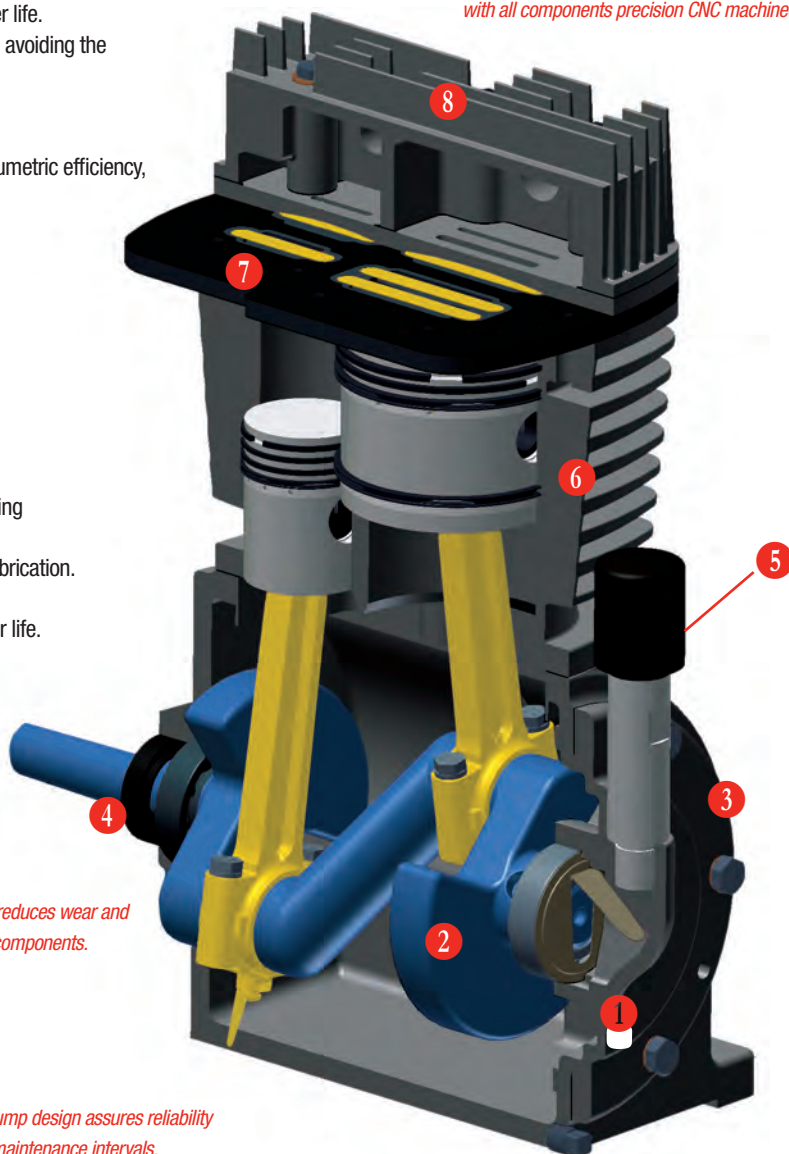
Two Stage Cast Iron Compressor

The sturdy iron crankshaft is bi-supported for smooth running, longer bearing life and less maintenance.

2. An oversized cast iron crankcase creates a large oil reservoir for reliable lubrication.
 3. Crankcase is vented to atmosphere.
 4. Oversized ball-bearing style shaft bearings for smooth operation and longer life.
 5. Venting system for reduced crankcase temperature and pressure.
 6. High profile fin design on cylinders optimizes heat dissipation.
 7. Large stainless-steel valves offer less restriction to flow, giving greater volumetric efficiency, cooler running temperatures and longer valve life.
 8. Cast iron head for heat dissipation.
- Oil sight glass for easy monitoring of the correct oil level.
 - Finned copper intercooler for heat dissipation.

*Low operating speed reduces wear and
extends the life of all components.*

*Rugged pump design assures reliability
and long maintenance intervals.*



Accessories

From fittings to drains, pumps to air chucks and everything in between, Mi-T-M is a one-stop shop for all your air compressor accessory needs.

Brass Fittings

Barbed Hose Fittings

Threaded end connects tools, fittings, couplers or plugs.
Barbed hose fittings repair or assemble damaged or bulk hose.
Corrosion-resistant brass construction.

23-0050 (3/8-male x 1/2-hose)

23-0051 (1/4-male x 1/4-hose)

23-0052 (3/8-male x 1/4-hose)

23-0069 (1/4-male x 3/8-hose)

23-0073 (3/8-male x 3/8-hose)



Brass Couplings

Use to combine two short hoses into one long hose. Corrosion-resistant brass construction.

23-0002 (1/4-inch FPT x 1/4-inch FPT)

23-0103 (1/4-inch MPT x 1/4-inch MPT)

Barbed Hose Splicers

Repair damaged hoses by combining hose sections together with our barbed hose splicers. Corrosion-resistant brass construction.

23-0415 (Fits 1/4-inch I.D. hose)

23-0416 (Fits 3/8-inch I.D. hose)

Steel Hex Nipples

For when you have a female NPT thread and need a male NPT thread.
Corrosion-resistant steel construction.

24-0010 (3/8-inch x 3/8-inch)

24-0024 (1/2-inch x 3/8-inch)

24-0031 (1/2-inch x 1/2-inch)

24-0145 (1/4-inch x 1/4-inch)

24-0146 (3/8-inch x 1/4-inch)

24-0265 (1/2-inch x 1/4-inch)



Coupler Test Bar

Coupler test bar includes four 1/4-inch plugs:

Tru-flate Automotive Style,
Industrial Interchange Style,
ARO Style and Lincoln Style.

17-4952



Gauges

Use our gauges to monitor tank and outlet pressures.

22-0257 (200-PSI maximum rating)

22-0271 (300-PSI maximum rating)

- 1/8-inch MPT



Air/Water Adapter Kit

For filling tires with liquids. Connects a standard tractor valve to 3/4-inch garden hose bibb. Push-button bleeder valve releases trapped air. Two extra bushings included to fit standard air/water valves, new style fast flow valves, large bore valves and extensions, or standard valve stems.

23-0414



Air Chucks

Use air chucks to help maintain proper tire pressure.

AT-3001 (Dual foot - 1/4-inch FPT)

AT-3002 (Ball foot - 1/4-inch FPT)

AT-3003 (Deluxe air inflator with 12-inch hose; 12 to 120-PSI)



Engine Oil Drain Kits

14-inch flexible drain hose makes oil changes cleaner and easier.

70-0357 (196cc Honda & 208cc Kohler engines)

70-0358 (270cc & 389cc Honda & 429cc Kohler engines)

70-0380 (126cc, 211cc, 265cc & 404cc Subaru engines)



Electric Compressor Drain

Automatically drains filters, compressor tanks, drip legs, aftercoolers and receivers.

AT-4012 (1/4-inch NPT connector)

- Not for use on Air Compressor/Generator models



Air Hoses/Leader Hose

Air Hoses

Ideal for most compressor lines and pneumatic tools. Non-conductive oil and abrasion resistant outer cover.

15-0230 (50-foot x 3/8-inch PVC)

15-0231 (25-foot x 3/8-inch PVC)

- 1/4-inch NPT fittings

15-0232 (50-foot x 3/8-inch Rubber)

15-0233 (25-foot x 3/8-inch Rubber)

- 1/4-inch NPT fittings

- Bend restrictors

Leader Hose

Our leader hose attaches between the air hose and your tool, allowing for more flexibility and safety.

15-0229 (24-inch leader hose swivel)

- Flexible hose

- 360° swivel fitting



Blow Guns

Our blow guns provide a leak-proof seal for blowing dirt and debris from lines with high pressure air.

AT-3004 (Blow gun, standard rubber tip)

AT-3005 (Blow gun, safety tip)

AT-3007 (AT-3005 with 1-foot extension)

AT-3008 (AT-3005 with 2-foot extension)

AT-3009 (AT-3005 with 4-foot extension)



Plugs

Add the ability to easily connect and disconnect your air tools and air hoses.

- 17-0049** (¼ MPT-¼ Industrial Interchange Style)
- 17-0050** (¼ MPT-¼ Automotive Style)
- 17-0051** (¼ MPT-¼ Lincoln Style)
- 17-0052** (¼ MPT-¼ ARO Style)
- 17-0053** (¼ FPT-¼ Industrial Interchange Style)
- 17-0054** (¼ FPT-¼ Automotive Style)
- 17-0055** (¼ FPT-¼ Lincoln Style)
- 17-0056** (¼ FPT-¼ ARO Style)
- 17-0061** (¾ MPT-¾ Industrial Interchange Style)
- 17-0062** (¾ FPT-¾ Industrial Interchange Style)
- 23-0017** (¾-inch to ¼-inch reducer)



17-0049 17-0053

Couplers

Add the ability to easily connect and disconnect your air tools and air hoses.

- 17-0043** (¼ MPT-¼ Industrial Interchange Style)
- 17-0044** (¼ MPT-¼ Automotive Style)
- 17-0045** (¼ FPT-¼ Industrial Interchange Style)
- 17-0046** (¼ FPT-¼ Automotive Style)
- 17-0047** (¼ FPT-¼ Lincoln Style)
- 17-0048** (¼ FPT-¼ ARO Style)
- 17-0059** (¾ MPT-¾ Industrial Interchange Style)
- 17-0060** (¾ FPT-¾ Industrial Interchange Style)
- 17-0067** (¾ FPT-¾ Industrial Interchange Style)
- 17-0068** (¾ MPT-¾ Industrial Interchange Style)



17-0045 17-0043

Coupler/Plug Sets

Add the ability to easily connect and disconnect your air tools and hoses.

- 17-0045K** (¼ FPT-¼ Industrial Interchange Style coupler; ¼ MPT-¼ Industrial Interchange Style plug)
- 17-0046K** (¼ FPT-¼ Automotive Style coupler; ¼ MPT-¼ Automotive Style plug)



17-0045K

Air Filter Elements

Paper air filter replacement elements. The paper passes air through the filter with low restriction, but any dust or dirt in the air is deposited on the pleated outer surface of the element.

- 19-0218** (2½-inch diameter x ¾-inch M)
- Replacement filter for 19-0217
- 19-0082** (3¼-inch diameter x ½-inch M)
- Replacement filter for 19-0083
- 19-0220** (4½-inch diameter x 1-inch M)
- Replacement filter for 19-0219 & 19-0240
- 19-0226** (6-inch diameter x ¾-inch M)
- Replacement filter for 19-0225



19-0226

Air Filter Canisters

Houses air filter elements

- 19-0215** (2½-inch diameter x ¾-inch M)
- Plastic filter canister
- 19-0217** (2½-inch diameter x ¾-inch M)
- 19-0083** (3¼-inch diameter x ½-inch M)
- 19-0219** (4½-inch diameter x 1-inch M)
- 19-0225** (6-inch diameter x ¾-inch M)
- 19-0240** (4½-inch diameter x ½-inch M)
- Metal filter canister



19-0215

Filters

Our air compressor filters remove dirt, debris and water in air line.

- AT-4004-M** (¼-inch poly bowl)
 - Includes bowl guard and manual drain
 - 150-psig maximum supply pressure
- AT-4005-M** (½-inch metal bowl)
 - Main line filter
 - Includes sight glass and manual drain
 - 250-psig maximum supply pressure
- AT-4006-M** (¾-inch poly bowl)
 - General purpose filter
 - Includes bowl guard and manual drain
 - 150-psig maximum supply pressure
- AT-4007-M** (Disposable in-line filter)
 - ¼-inch MPT x ¼-inch FPT
- AT-4008-M** (Air tool filter)
 - ¼-inch MPT x ¼-inch FPT



AT-4005-M AT-4008-M

Regulators

Regulators reduce and maintain pressure levels to safely operate air tools.

- 22-0326**
 - ¼-inch inlet/outlet
 - ⅛-inch gauge port
 - 250-psig max. inlet/125-psig max. outlet
- 22-0231**
 - ¾-inch inlet/outlet
 - ⅛-inch gauge port
 - 300-psig max. inlet/150-psig max. outlet
- 22-0358**
 - ½-inch inlet/outlet
 - ¼-inch gauge port
 - 300-psig max. inlet/250-psig max. outlet



22-0231 22-0326

Filter/Regulator

Our combination air compressor filter/regulator removes dirt, debris and water in air line while reducing and maintaining pressure levels to safely operate air tools.

- AT-4011-M** (¾-inch filter/regulator)
 - Poly bowl with manual drain
 - 150-psig maximum supply pressure



In-Line Lubricators

Ideal for air tool lubrication.

- AT-4009-M** (¼-inch poly bowl with bowl guard)
- AT-4010-M** (¾-inch poly bowl with bowl guard)
 - 150-psig maximum supply pressure



AT-4009-M

Replacement Pumps

Single Stage Pumps

Single stage replacement pump, cast iron with cast iron head.

3-0303

- Fits units up to 3.0-HP electric or 210cc gasoline

3-0315

- Fits units up to 2.0-HP electric

Two Stage Pumps

Two stage replacement pump, cast iron with cast iron head.

3-0298

- Fits units up to 5.0-HP electric or 270cc gasoline

3-0304

- Fits units up to 389cc gasoline

3-0312

- Fits ACS Series units

3-0313

- Fits ADS Series units

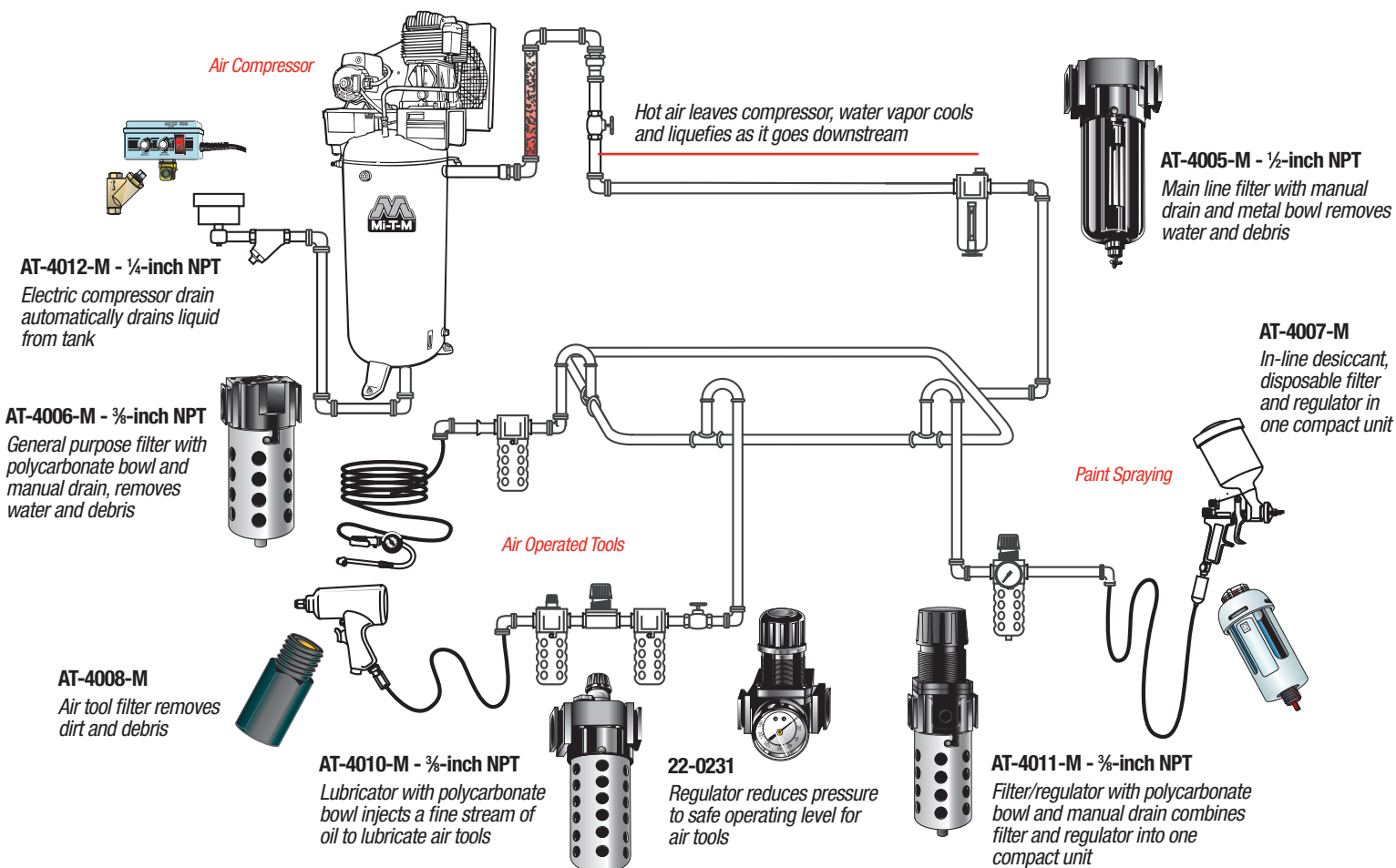
3-0314

-



Building An Efficient Air System

Compressed-air-powered equipment and machinery are critical elements in the productivity, efficiency and economy of today's industry. Quality air is the essential element for effective operation of this equipment. Water and dirt can cause major problems in compressed air lines. The use of filters that remove moisture and impurities from the air help high-speed pneumatic production lines operate more efficiently. Regulators and lubricators may also be added to control and lubricate downstream equipment. A quality air system can save time, money and keep equipment operating at maximum efficiency.

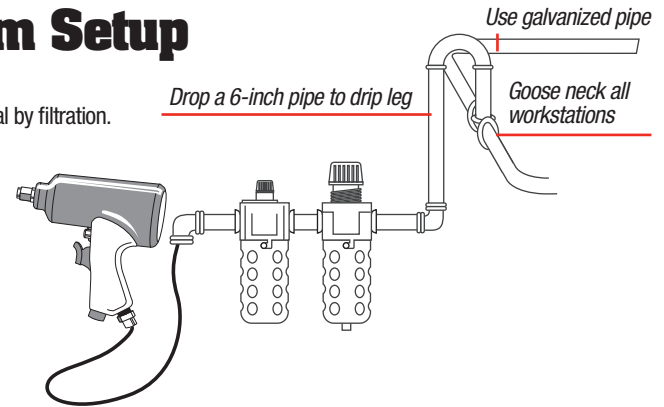


System Set-up & Air Estimating Guide

Important Steps to an Air System Setup

1. Main-line filter and regulator should be installed at least 20-feet from the compressor.
The air will cool down, allowing much of the water vapor to condense naturally for removal by filtration.
2. All line-drops (workstations) should be taken from the top of the main line.
This prevents water from flowing into branch lines.
3. Galvanized pipe is recommended when building an air system.

Follow illustration to the right when building a workstation drop.



Air Equipment Estimating Guide

Always use free air (CFM) and pressure (PSI) specifications from the nameplate on the device or from the manufacturer. Free air figures (in the table below) are averages and may differ by specific brand.

INDUSTRIAL EQUIPMENT CFM REQUIREMENTS BASED ON NORMAL USAGE

Miscellaneous Portable Tools at 70 to 90 PSI

Tools	CFM
Drill, 1/8" to 3/8"	6.3
Drill, 3/8" to 5/8"	8.8
Screwdriver, #2 to #6 Screw	3.0
Screwdriver, #6 to 5/16" Screw	6.0
Tapper, to 3/8"	5.0
Nutsetters, to 3/8"	6.0
Nutsetters, to 3/4"	7.5
Impact Wrench, 1/4"	3.8
Impact Wrench, 3/8"	5.0
Impact Wrench, 1/2"	7.5
Impact Wrench, 3/4"	8.8
Impact Wrench, 1 1/4"	13.8
Die Grinder, Small	3.8
Die Grinder, Medium	6.0
Horizontal Grinder, 2"	5.0
Horizontal Grinder, 4"	15.0
Horizontal Grinder, 6"	15.0
Horizontal Grinder, 8"	20.0
Vertical Grinders and Sanders, 5" Pad	8.8
Vertical Grinders and Sanders, 7" Pad	15.0
Vertical Grinders and Sanders, 9" Pad	17.5
Burring Tool, Small	3.8
Burring Tool, Large	6.0
Rammers, Small	3.3
Rammers, Medium	8.5
Rammers, Large	10.0
Backfill Tamper	6.3
Compression Riveter	0.2 cu. ft. per cycle
Nailers and Staplers	5.0 to 8.0
Riveter	6.0
Paint Spray Gun	5.0
Scaling Hammer	3.0
Chipping Hammer	7.5
Riveting Hammer	7.5
Circular Saw, 8"	11.3
Circular Saw, 12"	16.3
Lightweight Chain Saw	7.0
Heavy-Duty Chain Saw	21.8

AUTOMOTIVE EQUIPMENT CFM REQUIREMENTS BASED ON TOOLS BEING USED 25% OF THE TIME

Portable Tools	Equipment PSI Range	CFM
Air Filter Cleaner	70 to 100	3.0
Body Polisher	70 to 100	2.0
Body Sander, Orbital	70 to 100	5.0
Brake Tester	70 to 100	3.5
Carbon Remover	70 to 100	3.0
Dusting Blow Gun	90 to 100	2.5
Drill, 1/8" to 3/8"	70 to 90	4.0
Impact Wrench, 3/8" Square Drive	70 to 90	2.0
Impact Wrench, 1/2" Square Drive	70 to 90	3.5
Impact Wrench, 3/4" Square Drive	70 to 90	7.5
Impact Wrench, 1" Square Drive	70 to 90	10.0
Die Grinder	70 to 90	5.0
Vertical Disc Sanders	90 to 100	10.0
Filing/Sawing Machine, Small	90 to 100	3.0
Filing/Sawing Machine, Large	90 to 100	5.0
Burring Tool	90 to 100	5.0
Tire Rim Stripper	125 to 150	6.0
Tire Changer	125 to 150	5.5
Tire Inflation Line	125 to 150	1.5
Tire Spreader	125 to 150	1.0
Air Hammer	90 to 100	4.0
Tire Hammer	90 to 100	12.0
Bead Breaker	125 to 150	12.0
Spring Oiler	90 to 100	4.0
Spray Gun Engine Cleaner	90 to 100	5.0
Production Paint Spray Gun	90 to 100	8.5
Touch-Up Paint Spray Gun	90 to 100	3.5
Undercoat Paint Spray Gun	90 to 100	19.0
Grease Gun	120 to 150	3.0
Hydraulic Lift	145 to 175	6.0
Hydraulic Floor Jack	125 to 150	6.0
Pneumatic Garage Door	120 to 150	3.0
Radiator Tester	90 to 100	1.0
Transmission/Differential Flusher	70 to 100	3.0
Fender Hammer	70 to 100	9.0
Medium-Duty Sander	70 to 100	40.0